

# ARTCC ARGENTINO AD 2.SARP

**NO VALIDO PARA NAVEGACION REAL. ADAPTADO PARA SU UTILIZACION EN UN AMBITO VIRTUAL**  
**SARP – POSADAS / LIBERTADOR GRAL. D. JOSE DE SAN MARTIN**

## AD 2.17 ESPACIO AEREO ATC

### Zona de Control:

- |                                     |                         |        |
|-------------------------------------|-------------------------|--------|
| 1. Designación:                     | Zona de Control Posadas |        |
| 2. Límites verticales:              | <u>FL 025</u><br>GND    |        |
| 3. Clasificación del espacio aéreo: | C                       |        |
| 4. Distintivo de llamada:           | POSADAS TORRE           |        |
| 5. Altitud de transición:           | 3000 FT.                |        |
| 6. Nivel de transición:             | QNH de 977 a 994        | FL 050 |
|                                     | QNH de 995 a 1013       | FL 045 |
|                                     | QNH de 1014 a 1031      | FL 040 |
|                                     | QNH de 1032 a 1050      | FL 035 |

### Area de Control Terminal:

- |                                     |                                  |
|-------------------------------------|----------------------------------|
| 1. Designación:                     | Area de Control Terminal Posadas |
| 2. Límites verticales:              | <u>FL 095</u><br>2000 FT         |
| 3. Clasificación del espacio aéreo: | C: FL 095 / 2000 FT              |
| 4. Distintivo de llamada:           | POSADAS TORRE                    |

## AD 2.18 INSTALACIONES DE COMUNICACIONES ATS

SERVICIO	DISTINTIVO DE LLAMADA	FRECUENCIA	OBSERVACIONES
APP	Posadas Torre	120.100	-

## AD 2.19 CARTAS AERONAUTICAS

- |                       |                      |
|-----------------------|----------------------|
| - Plano de aeródromo: | SARP.APT             |
| - Cartas IAC:         | SARP.IAC NO.1 RWY 19 |
|                       | SARP.IAC NO.2 RWY 19 |
|                       | SARP.IAC NO.3 RWY 19 |
|                       | SARP.IAC NO.4 RWY 01 |

(DEJADO EN BLANCO INTENCIONALMENTE)

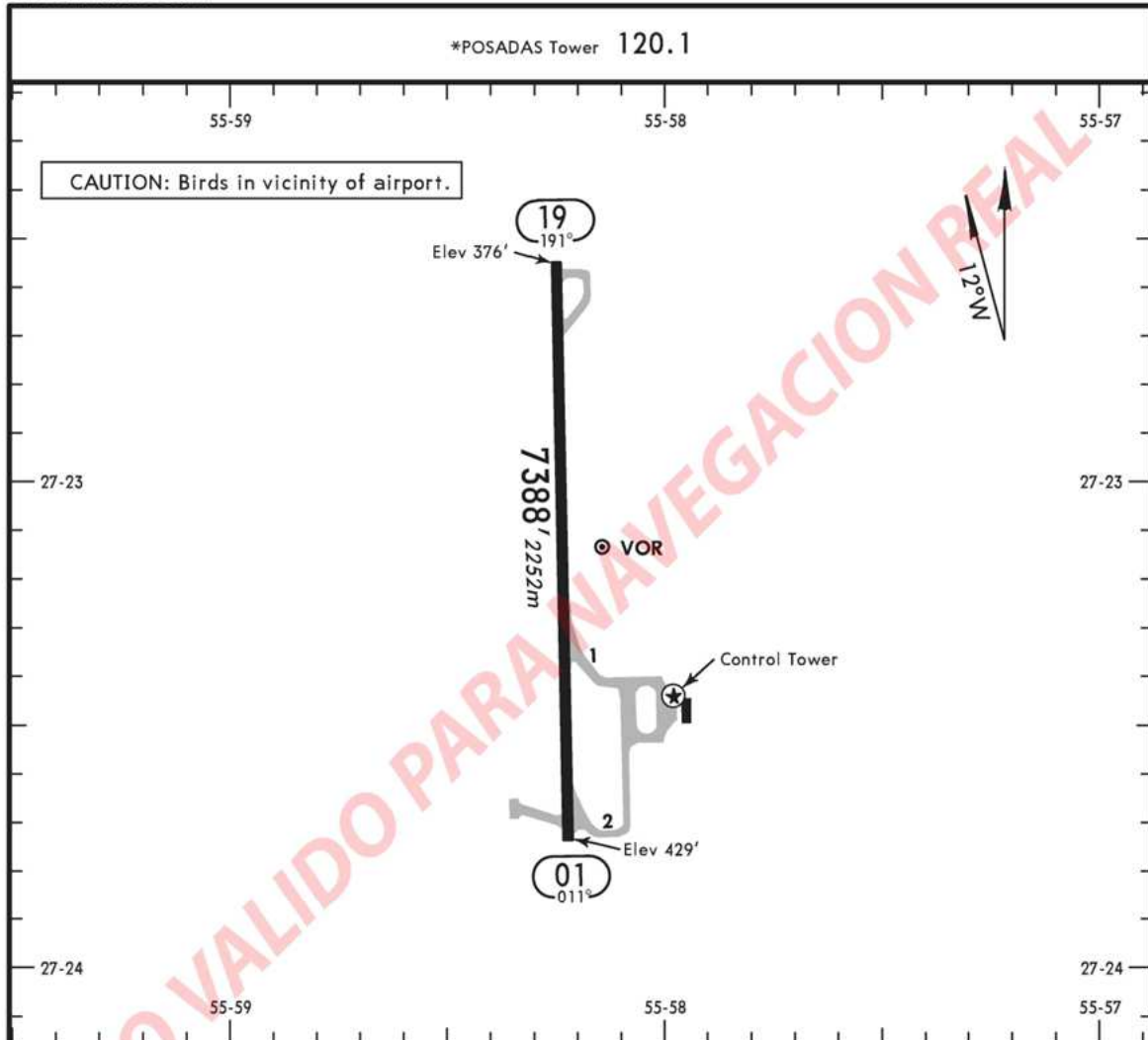
APT

SARP

Apt Elev **430'**  
S27 23.2 W055 58.2

POSADAS, ARGENTINA

LIBERTADOR GRAL D JOSE DE SAN MARTIN



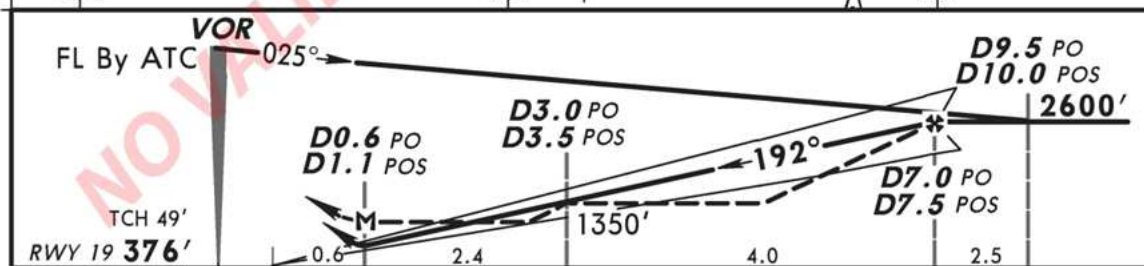
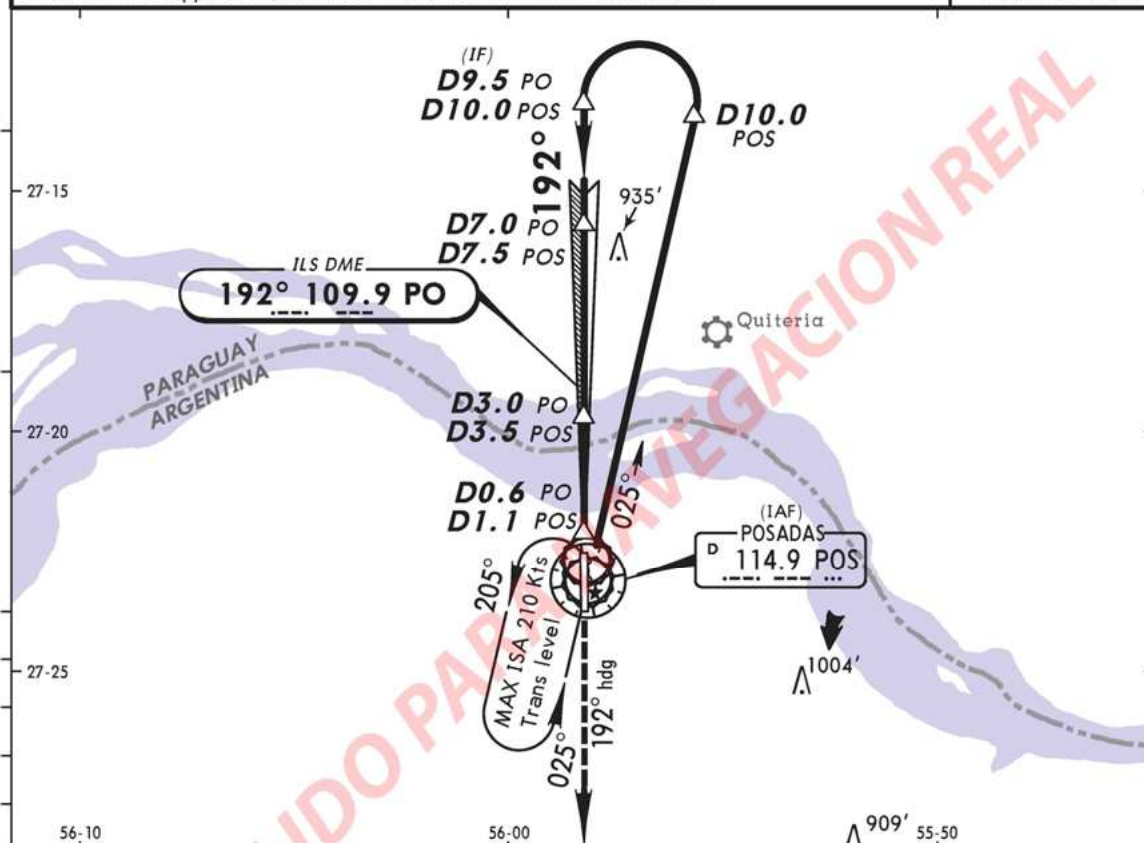
ADDITIONAL RUNWAY INFORMATION


RWY		USABLE LENGTHS		TAKE-OFF	WIDTH
		Threshold	LANDING BEYOND Glide Slope		
01	RL				98'
19	RL PAPI-L (angle 2.90°)		6186' 1885m		30m

**SARP**  
LIBERTADOR GRAL  
D JOSE DE SAN MARTIN

**POSADAS, ARGENTINA**  
No. 1  
**VOR DME ILS DME Rwy 19**

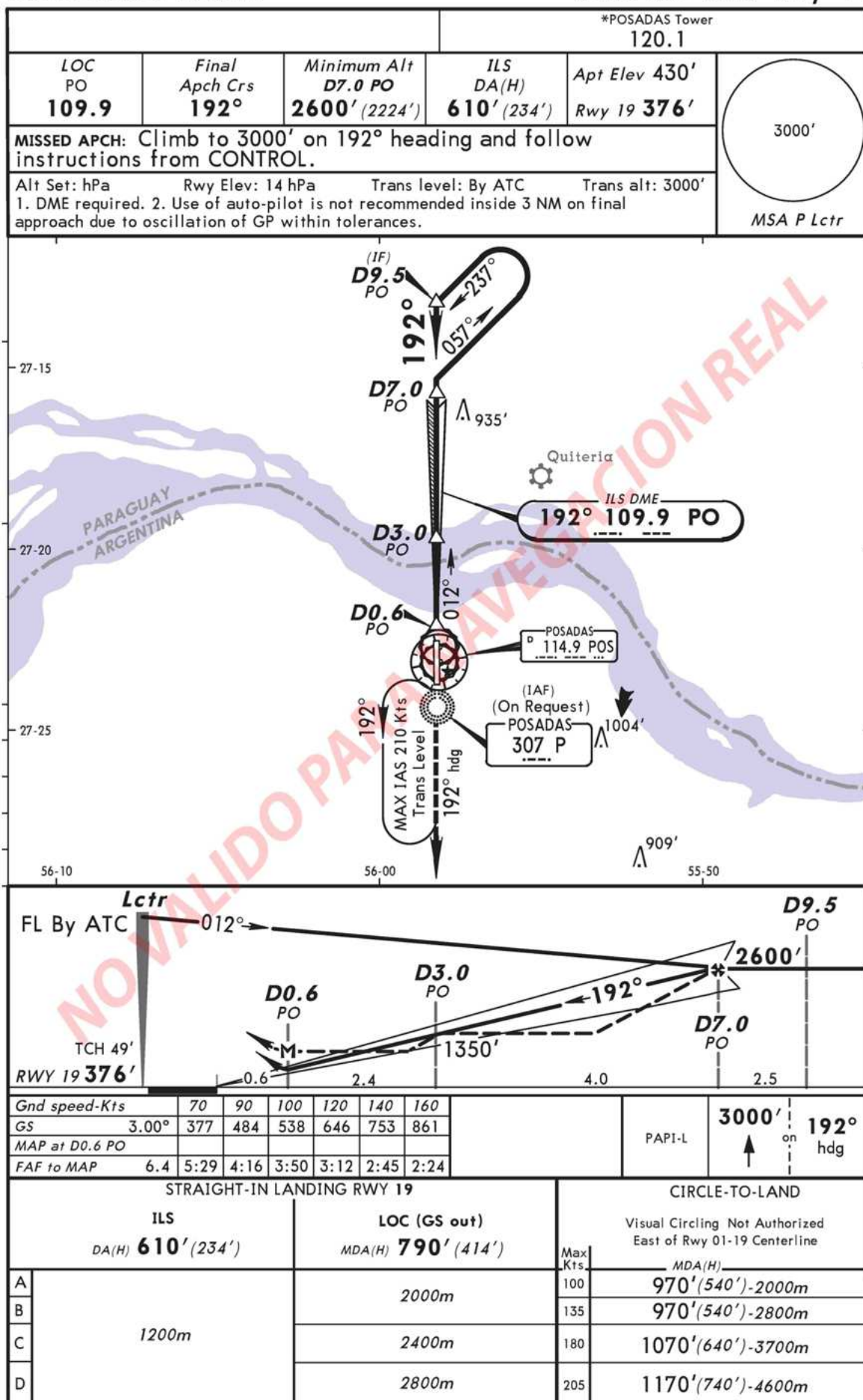
				*POSADAS Tower 120.1	
LOC PO 109.9	Final Apch Crs 192°	Minimum Alt D7.0 PO D7.5 POS 2600' (2224')	ILS DA(H) 610' (234')	Apt Elev 430' Rwy 19 376'	<div>3000'</div> <div>MSA POS VOR</div>
MISSED APCH: Climb to 3000' on 192° heading and follow instructions from CONTROL.					
Alt Set: hPa      Rwy Elev: 14 hPa      Trans level: By ATC      Trans alt: 3000'					
1. VOR DME and ILS DME required.    2. Use of auto-pilot is not recommended inside 3 NM on final approach due to oscillation of GP within tolerances.					



Gnd speed-Kts		70	90	100	120	140	160	PAPI-L	3000'  on 192° hdg
GS 3.00°		377	484	538	646	753	861		
MAP at D0.6 PO/D1.1 POS									
FAF to MAP 6.4		5:29	4:16	3:50	3:12	2:45	2:24		
STRAIGHT-IN LANDING RWY 19								CIRCLE-TO-LAND	
ILS DA(H) 610'(234')				LOC (GS out) MDA(H) 790'(414')				Visual Circling Not Authorized East of Rwy 01-19 Centerline	
A	1200m			2000m			Max Kts	MDA(H)	
B							100	970'(540')-2000m	
C							135	970'(540')-2800m	
D							180	1070'(640')-3700m	
				2800m			205	1170'(740')-4600m	

**SARP**  
LIBERTADOR GRAL  
D JOSE DE SAN MARTIN

**POSADAS, ARGENTINA**  
No. 2  
**LCTR ILS DME Rwy 19**

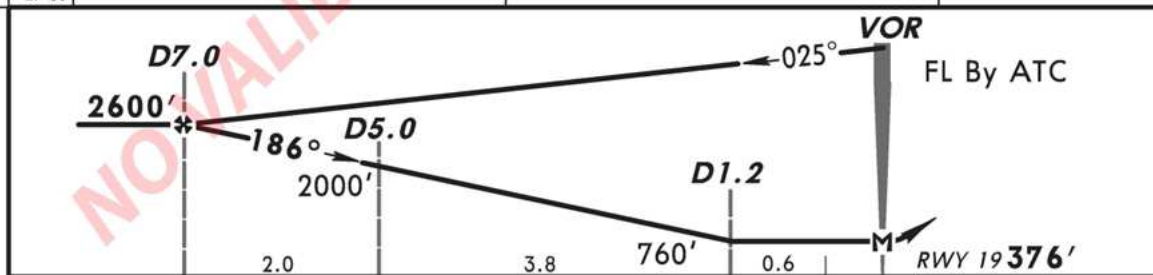
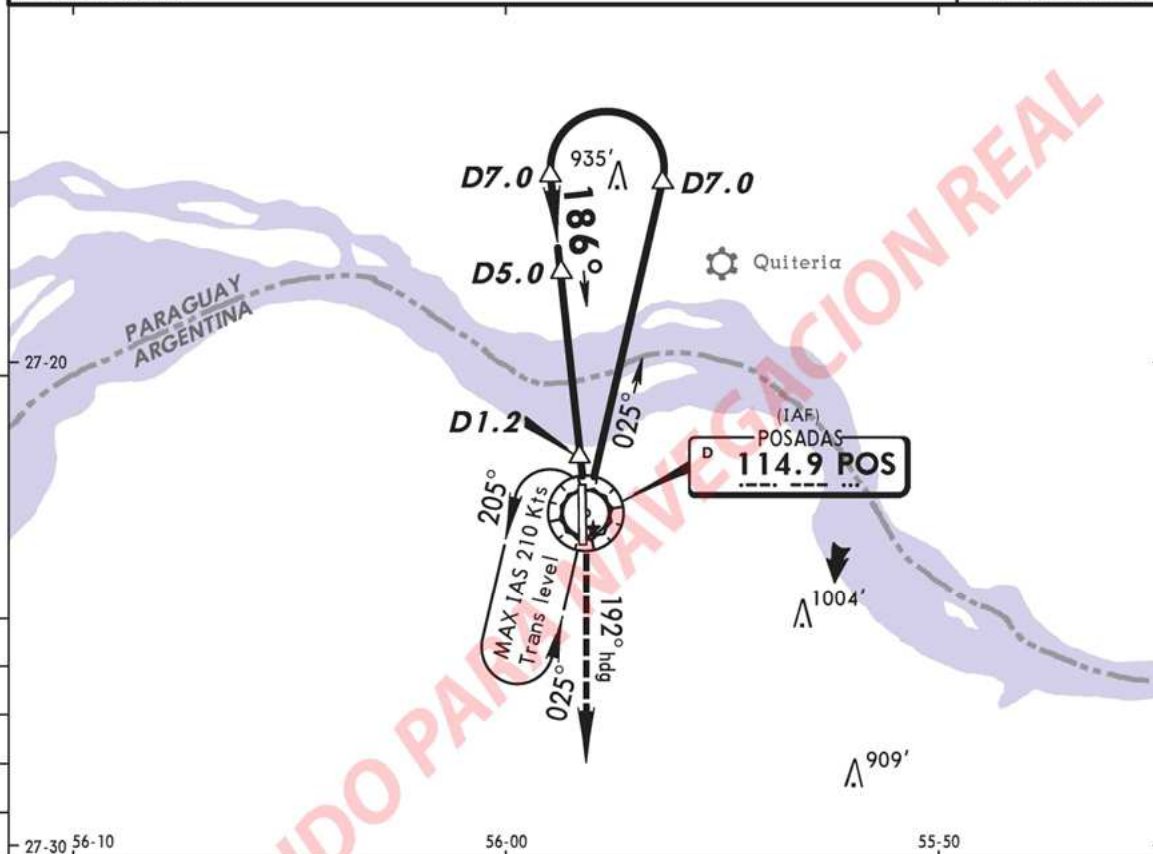




SARP  
LIBERTADOR GRAL  
D JOSE DE SAN MARTIN

POSADAS, ARGENTINA  
No. 3  
VOR DME Rwy 19

				*POSADAS Tower 120.1	
VOR POS 114.9	Final Apch Crs 186°	Minimum Alt D7.0 2600' (2224')	MDA(H) 760' (384')	Apt Elev 430' Rwy 19 376'	<div>3000'</div> <div>MSA POS VOR</div>
MISSED APCH: Climb to 3000' on 192° heading and follow instructions from CONTROL.					
Alt Set: hPa 1. DME required.		Rwy Elev: 14 hPa	Trans level: By ATC	Trans alt: 3000'	



Gnd speed-Kts	70	90	100	120	140	160		
MAP at VOR								
FAF to MAP	5.8	4:58	3:52	3:29	2:54	2:10		
STRAIGHT-IN LANDING RWY19							CIRCLE-TO-LAND	
MDA(H) <b>760'</b> (384')							Visual Circling Not Authorized East of Rwy 01-19 Centerline	
A	2000m						Max Kts	MDA(H)
B							100	970' (540') - 2000m
C							135	970' (540') - 2800m
D							180	1070' (640') - 3700m
							205	1170' (740') - 4600m

SARP

LIBERTADOR GRAL  
D JOSE DE SAN MARTIN

POSADAS, ARGENTINA

No. 4

VOR DME LCTR Rwy 01

